

# THE Rabbiter



Issue 274 September 2020

All the regular features plus

- **LOCAL PLANNING NEWS**
- **THE HOLLY BLUE TO OPEN**
- **HELP WATER YOUNG TREES**

*and much more*

The Community Newsletter for

**Hatch Warren, Beggarwood  
and Kempshott Park**



# Looking for a trusted, local business for your next home project?

- ✓ Windows & Doors
- ✓ Conservatories & Orangeries
- ✓ Garage Doors
- ✓ Guaranteed Work
- ✓ Great Prices
- ✓ Finance Available



Call 01256 841522      [riptonwindows.co.uk](http://riptonwindows.co.uk)

**Why not visit our showroom in Chineham?**

We have lots of example conservatories, windows and doors, with free parking and a decent cuppa.

**Quote 'RABBITER' for a preferential quote.**



# THE Rabbiter

## INSIDE THIS ISSUE

- 6 BASINGSTOKE CIVIL SERVICE RETIREMENT FELLOWSHIP
- 7 COUNCIL TAKES PROACTIVE APPROACH  
BASINGSTOKE DEANE ROTARY
- 8 PROBUS AND THE LOVE OF BANK NOTES  
THE NEW BEGGARWOOD SURGERY
- 10 PHILLIPS SOLICITORS  
SAINSBURY'S
- 12 CAFÉ IN THE PARK RECIPE  
RESTAURANT REVIEW
- 14 UPDATE ON IMPROVEMENT WORKS  
PROTECT THE NORTH HAMPSHIRE DOWNS  
THE CAGE CAMPAIGN
- 16 CHILDREN'S CORNER  
NEW £4MILLION PUB SET TO OPEN IN SEPTEMBER  
HELP WATER YOUNG TREES THROUGH THE DRY SUMMER
- 17 COUNCILLOR'S UPDATE  
BASINGSTOKE VOLUNTARY ACTION  
BASINGSTOKE - OLD BASING U3A  
THIRD AGE TRUST
- 18 COMMUNITY CENTRE
- 19 THE WARREN
- 20 OLD DOWN AND BEGGARWOOD WILDLIFE GROUP
- 21 HATCH WARREN W.I.  
SPIRITUALLY SPEAKING
- 22 RABBITER CONTACTS
- 23 KEMPSHOTT CONSERVATION GROUP  
BRITISH SNAKES  
BUS TIMETABLE
- 24 CLASSIFIED ADS  
STAMP OUT DOG FOULING  
BOOKWORMS
- 25 FREEADS
- 26 BMAF CREATIVE WRITING COMPETITION

Printed by Greenhouse Graphics Ltd  
www.greenhousegraphics.co.uk

## EDITORIAL

September is suddenly upon us. Summer is almost over and slowly life is getting back to 'normal'. The days are getting shorter, holidays are over and children are heading to school. But the year so far has not been like any other – staycations rather than trips to exotic places, homeschooling and baking. Friends tell me that their gardens have never looked so good and many waistlines have expanded thanks to homemade bread and banana cake. During this time there have been some wonderful deeds done and a number of local residents have received letters of thanks from the Mayor of Basingstoke and Deane – Beggarwood Bookworms have shopped and helped many residents isolating, Angela and her team have made over 260 items of scrubs, bags, masks and headbands and the Portsmouth Arms have raised mega bucks for charity. Well done everyone!

The Café in the Park is now open on Fridays, Saturday and Sundays for take away drinks and their delicious cakes – and the delicious bacon baps. We are looking forward to the opening of the new pub, The Holly Blue. The Rabbiter have tried hard to establish the opening date and understand it will be during September. And work is underway on the new Lidl store where the Argos store was situated.

Development along the A30 toward junction 7 is underway. There have been roadworks to create access to the Hounscome Fields site and there is a proposal to create warehousing on land adjacent to M3 junction 7. Full plans and how to comment are available on the Basingstoke and Deane planning portal reference no: 20/02162/OUT. This development will create many jobs but also have a large impact on our already busy roads/infrastructure. See also article on page 7.

Now we can all get out more it is hoped that working parties will be starting again on Old Down – see page 20. Walking across Old Down has been a delight during the last few months and groups such as the Old Down and Beggarwood Wildlife Group and Kempshott Conservation Group (see page 23) work hard to maintain our open spaces.

Zooming has become second nature to many of us and members of the local WI is no exception – see page 21 for details of how you can join in. The September meeting on the History of Hampshire sounds fascinating.

Immanuel Church is holding services again at St Mark's School. If you are unable to join in the online services are continuing – see page 21.

What have you been doing during lockdown? If you have been spending the last few months at home having a clear out, please remember that you can advertise your unwanted items free in The Rabbiter. Just send details of the item to newsdesk@therabbiter.biz by 15th of the month. And let us know what you have been doing – I have a friend who has written and self-published a childrens book. Stay safe and well everyone.

### The Editor

Cover: Basingstoke canal at Winchfield.

## 1<sup>st</sup> Response Heating & Plumbing

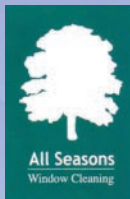
- Heating installations
- Boiler changes/upgrades
- Servicing
- LPG Gas installation/service
- Breakdowns
- Landlord Safety Checks
- Power flushing
- Water softeners

Call Jamie Davenport 24hr - 7 Days a Week  
Tel No: 01256 398611 Mobile No: 07876 687422

  
Worcester  
Bosch Group  
Accredited Installer



An established, family run local business with 20 years' experience



# All Seasons Window Cleaning



Reliably serving the Hatchwarren / Beggarwood community for over 20 years

## Additional services include:

- Driveway cleaning •
- Cladding/signage cleaning •
- Gutter/fascia/soffit cleaning •
- Conservatory roof cleaning •
- Pure water - no chemicals •



Call STEVE on 01256 353727

Email: [info@allseasonswindowcleaning.com](mailto:info@allseasonswindowcleaning.com)  
Web: [www.allseasonswindowcleaning.com](http://www.allseasonswindowcleaning.com)  
[www.facebook.com/allseasonswindowcleaninguk](https://www.facebook.com/allseasonswindowcleaninguk)



## FED UP WITH HARD WATER IN YOUR HOME?

### The Perfect Solution - A TwinTec Water Softener



Shower heads constantly need descaling otherwise water flow will be compromised



They will spray like new



Scale deposits will form on taps



No crusty scale deposits on taps - only a quick wipe needed to keep them sparkling

Top class service and workmanship, very impressive

Mr T Phillips, Farnborough

"The service we received was excellent the plumber explained everything and it was easy to understand. Kevin runs a very professional company."

Mrs Axford, Basingstoke

**UK WATER SOFTENERS**

Proud members of  
**Checkatrade.com**  
Where reputation matters

Covering Hatch Warren, Beggarwood and surrounding areas

Tel: **01276 27924** | Mob: **07899 895152**

**Kevin Goody**  
Authorised  
TwinTec Dealer

[ggoody@uk-water-softeners.co.uk](mailto:ggoody@uk-water-softeners.co.uk) | [www.uk-water-softeners.co.uk](http://www.uk-water-softeners.co.uk)

Local to Hatch Warren and Kempshott

## SOUTHERN WINDOW INSTALLATIONS

### Window & Door Specialist

Bi-Fold Doors • Composite Front Doors



**Wide Range • Superior Quality • Low Prices**  
**Windows • Conservatories • Repairs**

We are a local family run business offering knowledge and expertise with a friendly approach.

**Checkatrade.com**  
Where reputation matters

**01256 812622 • 07878 236001**  
[www.southernwindowinstallations.co.uk](http://www.southernwindowinstallations.co.uk)



**Spencer & Peyton** *Established 1961*  
*3rd Generation family owned and run*  
*Funeral Directors and Monumental Masons*

Our family serving your family for over 55 years

380 Worting Road, Basingstoke, RG22 5DZ  
**01256 323165** The Flower Girl florist on site  
 7 London Road, Hook, RG27 9DY  
**01256 761717**

Trading Standards approved  
 Pre-paid funeral plans discussed without obligation

spencerandpeyton@btconnect.com  
 www.spencerandpeyton.co.uk

24 Hours

**Aaron Ford - Decorating and Home Projects**

Painting and Decorating. Ceramic Tiling  
 Bathrooms and kitchens refurbished  
 Bath/shower/worktop silicone replaced  
 Flatpack assembly and many other small jobs  
 Quality workmanship. Fully insured  
 Free estimate or advice

01256 350937 - 07771 531069  
 aaronaford@hotmail.com



**PC Doctor** (Hampshire) Ltd  
**Andy Pearce 01256 841204**



Home & Small Business PC's & printers supplied.  
 PC repairs & upgrades, Laptops & Desktops. Wireless networking. Virus & Malware removal. New PC & Tablet setup. Data & Email transfer from old system.

pcdoc.hampshire@btinternet.com

**Candover Park Solutions**

**Computer Problems?**

Friendly professional IT services for business and home:

Apple iPad setup/training - Mac support - Virus removal - Email Computer performance issues - Wireless, Internet & Broadband Hardware & Software Installation - Business solutions/support

Steve Troth - Local IT professional 25+yrs experience  
 Tel: 01256 807 876 or support@candoverparksolutions.co.uk

**SMALL JOBS**

Professional & Friendly Service Any manner of small jobs undertaken

Plumbing, Tiling, Fencing, Decorating,  
 Flat Pack assembly, I also offer a  
 Grave Care Maintenance Service  
 and many other small jobs

In fact ANY SMALL JOB you need doing  
 For a free quote please call Glyn on 07737 190179

**Calico**  
 FOOD FOR ALL OCCASIONS

Chef trained at the prestigious Leith's School of Food and Wine now working locally

Event catering  
 for dinner parties, birthdays, canapés, corporate lunches, funerals and more

connie@calicofood.co.uk | 07780 888336 | calicofood.co.uk

**MIKE'S GARDEN SERVICES**



- General garden maintenance • Landscaping and planting • Garden clearances • Tree / hedge work
- Fence & shed work / treatments • Lawn mowing
- Turf laying • No job too small • Fully insured
- Logs, Kindling and De-icer deliveries
- Free estimates • Competitive rates

**Tel: 01256 325015**  
 mnm.chapman@talktalk.net  
 www.gardenerbasingstoke.com

AFFORDABLE CARE & SUPPORT FOR ALL YOUR GARDEN NEEDS

Find us on Facebook Rated People

INTERIOR **Painter's Pride** EXTERIOR



EXPERIENCED HOUSEHOLD  
**PAINTER & DECORATOR**

NO JOB TOO SMALL, LOCAL TO HATCH WARREN.  
**TEL: 01256 355356 or 07876 495657**

**Jonathan Williams**  
 Independent Funeral Directors

Family owned and run,  
 independent Funeral Director  
 with traditional values.  
 Professional, caring and  
 sympathetic staff available 24  
 hours a day 365 days a year.

35 - 41 Essex Road  
 Basingstoke  
 RG21 7TB  
**01256 817603**



## BASINGSTOKE CIVIL SERVICE RETIREMENT FELLOWSHIP

After our meeting with the AGM on 4th March members were looking forward to a trip on Wednesday 25th March to Dorney Court where we were to have an exclusive guided tour of this Tudor Manor House which is rarely open to the public. Sadly, due to the Coronavirus outbreak this did not take place along with planned visits to Hatfield House, Newbury Races, Hever Castle and Afternoon Tea at BCOT. Countryfile Live at Windsor Great Park in August has been cancelled as has the visit to Osborne House in September. It remains to be seen whether the Mystery Trip in October, a visit to Bicester Village Shopping Outlet in November and Christmas Lunch at BCOT in December will be able to go ahead but we will have to wait and see. None of the monthly meetings have taken place since March and there again it remains to be seen as to what will happen.

In the mean-time members have been kept in touch with the group by means of a monthly newsletter as well as a telephone call from a member of the committee which has been much appreciated. For most people whether they be isolating or shielding the lack of socialising has been the thing they miss most so they are all keen to see things get back to normal as soon as possible. The following comments from some of the members give some idea of the different ways that people have coped.

*"I should have been sailing from Tilbury, then via the Kiel Canal to Wisser, Germany, then on to Ronne, Denmark, Kariskrona, Sweden, sailing through the Baltic Sea, to Gdansk, Poland, finally returning to Tilbury via the Kiel Canal. Robbie Burns wrote about the 'best laid plans of mice and men' going pear shaped. Well not in those words exactly, but that was what he meant. So instead sat in the garden with a 'cuppa' and the cat and went outside to clap the NHS on Thursday evenings at 8pm while thanking God for all who work to save lives."*

*"The garden came in to its own, the birds using our nest boxes and building their nest for the new arrivals. We had white caps and black birds, beautiful songs between them. I enjoyed phoning some of our members once a month, they cheered me up. We miss the days out with the club and on our own or with the family and are ready and hopeful to get back to some sort of normal, if slowly, in the near future." "I used to go swimming and missed the exercise so what shall I do? Go for a walk was the answer and although I miss the companionship of my swimming pals I have been able to enjoy new pleasures. The sunrise over the fields, with eerie morning mist some days, the wild life, the wild flowers (17 different ones noted one day), the freshness of the air and the singing of the birds. I am sure I feel better than ever." "Garden never looked better, a lot of work put in because I couldn't go for a swim or play bowls. Oh! and brown as a berry."*

*"On V.E. day we joined our neighbours and all had a picnic on our drive. Umbrella up as very hot day, table and chairs out and picnic hamper which I must admit I have never used before, and of course Union Jack flags and bunting up. It was a lovely afternoon and everyone at a safe distance."*

When things return to normal the group meets on the first Wednesday of each month at Brookvale Village Hall from 10am to 12 noon. Further details can be obtained from [csrfbasingstoke@gmail.com](mailto:csrfbasingstoke@gmail.com)

**David Cowling**

## FIRST CLASS UPGRADE FOR YOUR LOFT...

We are specialists in installing loft ladders and hatches. We also supply and install loft boarding, lighting and insulation - to take the heat out of packing your bags (and help you get away from all that clutter for good).



[WWW.ACCESS4LOFTS.CO.UK](http://WWW.ACCESS4LOFTS.CO.UK)



### WHAT MAKES US DIFFERENT

- You don't have to wait around for us to arrive!
- Lifetime guarantee
- You'll have added peace of mind knowing we are accredited by Which? Trusted Traders
- You could gain up to a third more space
- No mess, no fuss, just safe, easy access to your loft space.

Call to book a FREE survey & quotation

01256 688648



## Weller Mackrill Chartered Certified Accountants and Tax Advisers

Accounts  
Tax & VAT Returns  
PAYE & CIS  
Company formations  
IR35 advice  
Tax planning  
Free initial consultation

Weller Mackrill, South Building,  
Upper Farm, Wootton St Lawrence, Basingstoke.  
RG23 8PE

For a friendly and sensibly priced service  
Please ring  
**01256 782059**

E-mail:

[paul@wellermackrill.co.uk](mailto:paul@wellermackrill.co.uk)  
[james@wellermackrill.co.uk](mailto:james@wellermackrill.co.uk)



## COUNCIL TAKES PROACTIVE APPROACH TO VISION FOR M3 JUNCTION 7 LAND

A proactive strategic vision for land to the north of M3 junction 7 is being drawn up by Basingstoke and Deane Borough Council, focusing on the delivery of infrastructure needed to support residents' quality of life, opportunities for new jobs and better facilities.

The move comes as the pace of development, on land identified in the Basingstoke and Deane Local Plan to 2029, increases around this area with Manydown and Basingstoke Golf Course getting planning approvals recently and work starting at Hounsme Fields.

The strategic vision will build upon the infrastructure planning work already undertaken to support the Local Plan. Informing the next Local Plan in its earliest stages, this work will help to ensure that there is a co-ordinated approach, guiding any further development of the area in the future.

As the next Local Plan will create the blueprint for further development across the borough for years to come, a number of landowners in the area have already put forward sites to be considered for housing and business development in the future. Developers have also flagged other possible planning applications.

Working with partners, the council will take a comprehensive look at the area and its needs, to ensure that the right infrastructure is in place at the right time and it supports the future economic prosperity of the borough.

Cabinet Member for Planning, Infrastructure and Natural Environment Cllr Mark Ruffell said: "There are lots of possible future development proposals for this area that could come forward. For example, we know that there was a previous application for a hospital near junction 7 owing to its great strategic location. Public engagement is being carried out on future health services for north and mid Hampshire and we would like to see a new hospital in Basingstoke.

"It is crucial that we have a clear and joined up vision for the provision of infrastructure around the M3 junction 7 area as early as possible. We want to listen to the competing interests of residents and landowners to ensure that any further development of this area is well thought out. This will be a significant piece of work, and I look forward to discussing this in more detail with councillors at committee later this year."

The council is already working with highway authorities to move forward the transport strategy for the borough. This includes looking at the future capacity of junction 7 and planning ahead for 21st century public 'mass rapid' transport to encourage people out of their cars, responding to the climate emergency. The strategic vision will look at issues such as the connectivity to the town centre along the A30 corridor; improving cycle and walking links and reducing bus journey times.

Considering wider needs such as health, education, water and sewerage, this coordinated and well thought through approach will help to highlight needs and future funding opportunities and help other local services to plan ahead in a coordinated way. It will also consider the need to retain the character and identity of villages in the area and ensure that addressing climate change is at the heart of any future proposals.

The council is in the very early stages of updating the Local Plan which will set out a strategy for meeting the borough's needs, including homes and employment, beyond 2029. This is a lengthy and detailed process with the plan due for adoption around 2023.

## BASINGSTOKE DEANE ROTARY

### Can you make a child happy with a shoebox full of goodies?

Last year Rotary Wessex (Hampshire and east Dorset) distributed over 26,000 shoeboxes full of goodies to delight children in Montenegro, Moldova, Albania and the Philippines who live in poverty. To make sure they don't go astray Rotarians supervise the whole process including volunteers going to the countries to make sure the boxes get to the children. Philippines boxes go to a charity set up by a Rotarian that we know, so they will not go astray.

We have been told by recipients of shoeboxes, who have now grown up, of the excitement with which they were opened and what treasured memories they have of that special gift. It's great fun to get involved in putting together a shoebox. Ideas below of what can you put in your box, things for:

**Playing** – ball, skipping rope, small games, cards, dominoes, harmonicas/recorders, cars, small toys, Cuddly toy

**Washing** – soap, toothbrush

**Writing** – pens, pencils, sharpener, notebook, colouring book, puzzle book

**Wearing** – hat, gloves, scarf, socks, hair accessories, jewellery

Items need to be new or in good/as new condition.

### Please – No liquids, sharp items, guns or war toys

Boxes for either **Boys** or **Girls**, ages, 1-3, 4-7, 8-11, 12-15

Just use elastic bands to secure your box so it can be checked by customs. Forms to attach to your box and further info and small print on our website and Social media.

Remember that recipients will be opening the box in eager anticipation of finding it full of toys and useful items, possibly the first gifts they have received.

One girl, aged 8 was thrilled to receive the first doll of her own, and said: "it is the most beautiful doll I ever saw. I will dress her and take care of her; I never had a doll before." A 10 year old boy received a baseball cap and wore it all afternoon showing the dispatch team saying "I look so cool."

Why not get your workplace, church, club, your school, Scout, Cubs, Brownie & Guide groups, your children, grandchildren or just you involved, start now so with your help Christmas time can be special for these children who don't have a lot and spread a little joy

Please also attach coins to the value of £1.50p to each box for transport cost.

Drop off your box at the venues below by **19th October 2020**

Eden Mazda Basingstoke, London Road, Old Basing, RG24 7JD

Oakley Carpets. Station Yard, Andover Road, RG23 7HA

Parnell, Jordy & Harvey, 5 Winchester Street, Overton, RG25 3HR

Facebook: @RotaryBasingstokeDeane Twitter: @RBstokeDeane

We need helpers to distribute the Rabbiter. This takes about half an hour a month. Sadly we can't offer any financial reward save the satisfaction of helping our community. The following rounds need a deliverer:

1. Priest Down and Old Beggarwood Lane
2. Camford Close
3. Wentworth Crescent; Belfry Square; Turnberry Drive and Gleneagles Close
4. Whitgift Close
5. Maplehurst Close; Woodstock Mead; Malham Gardens and Roseberry Close
6. Paterson Close







## PROBUS AND THE LOVE OF BANK NOTES [www.probusbasingstoke.club](http://www.probusbasingstoke.club)

In normal times we handle it every day. Money, they say, makes the world go around. Others see it as the root of all evil. These days we are using less coinage but an increasing use of cards, however bank notes make us feel good if we have plenty in our wallet.

Basingstoke is the headquarters of Thomas de la Rue, the world-famous producer of bank notes, and Probust Club of Basingstoke member; John Swain, was employed in that specialised printing industry all his working life.

Leaving grammar school at 16 he followed his father into the printing trade and undertook an apprenticeship of five years as a camera operator. On becoming a journeyman he joined security printer Bradbury Wilkinson in New Malden and as John says "learned about making security documents and how to spot and prevent forgeries."

Despite operating in a tightly controlled secure environment it was noticed that some Travellers cheques began to go missing. Despite stringent checks on employees at entry and exit of the factory it was only by spotting which member of staff was enjoying exotic holidays and

had a new car they discovered he was simply using a Royal Mail post box in their reception to send an envelope to his home.

An intended advancement to head up their photographic studio did not proceed as the company was taken over by Thomas de la Rue, but instead he became the general manager of the New Malden plant. "All I had to do was to reverse a deficit of £12 million which in five years turned into a profit of £2 million."

Moving to Basingstoke in 1990 to head up a new, large photographic and proofing department was a continuous learning curve as the printing of the latest style of notes can involve over fifty security features as well as three different printing processes with visible and invisible fluorescent inks and holographic images. Moving from water marked cotton-based papers, made by their Overton mill, to the latest polymer substrate is not as new as one might think. Back in 1970 Bradbury Wilkinson produced the Isle of Man £1 notes on plastic but then discovered that the ink came off if a note was accidentally left in clothes put in a washing machine. Eventually, after over two decades of

research, the problem was solved, but by an Australian printer.

Visiting overseas De La Rue production facilities became a regular occurrence for John and after one trip he was stopped by a Customs officer at Heathrow. On this occasion the standard documentation he carried failed to impress the officer and as currency printing plates and ink looked suspicious the officer demanded the plate box and ink be opened. It was explained that it contained specialist fluorescent ink that was also indelible and should, on no account be touched. Of course, the officer got ink on his fingers and made the situation worse by using a tissue to spread it over his hands.

John smiled at this recollection. "That was a good few years ago, so I guess it has worn off by now."



## THE NEW BEGGARWOOD SURGERY

A successful Patient Participation Group (PPG) meeting with the Beggarwood surgery has now been held for the second time utilising on-line video conferencing. We received a positive report on the continuing functionality of the surgery and those around the Basingstoke area. Morale remains high within the surgery and both staff and patients seemed to have embraced the new technology that has been introduced to support the new ways of working whilst safely ensuring social distancing. Despite all of the changes enforced upon the surgery they have received no complaints regarding service during the pandemic. This is a tribute to all the hard work the medical and support team has put in on our behalf during these strange times.

To expand on the above, during the pandemic The Beggarwood surgery has been working in partnership with Bermuda and Marlowe, Rooksdown and Bramblys Grange surgeries to split cases into different areas set up in Basingstoke town. Staff are triaging telephone

calls from patients and if they have coronavirus symptoms they are referred to the Red Site located at Bermuda and Marlowe. Beggarwood patients with no coronavirus symptoms are seen at the Beggarwood Surgery which is classified as an 'amber' site. Throughout the pandemic, Dr. Oshiga has been working with a cross practice team of clinicians who are taking on the home visiting of elderly and vulnerable patients to ensure they have access to care in as safe a way as possible.

The surgery has been extensively using video and e-consulting appointments, which have proved very popular, and their use has increased 900%. Patients are reporting that they like the fact that they do not have to travel to the surgery. This type of appointment will continue to be available after the pandemic is over.

Some nationwide services are now getting back to normal; smear testing went live again on 6th June 2020 and high-risk breast screening has continued as usual throughout the lockdown as has

high-risk diabetes screening. Basingstoke Hospital has a screening centre on site and has developed a 20 minute test for coronavirus which is being shared across the area

If you need to contact a doctor please ring the surgery as usual and you will be offered a triage call the same day.

This update is compiled by the Members of the Beggarwood Surgery Patient Participation Group. The Group (PPG) is open to all patients of the Beggarwood Surgery. If you would like to join us please either give your contact details to one of the Reception staff at the surgery, or fill in the online form on the surgery website. We welcome all new members.

Broadmere Road, Beggarwood, RG22 4AQ Tel: 01256 396500

[www.beggarwoodsurgery.co.uk](http://www.beggarwoodsurgery.co.uk)

Karen Blackhall – General Manager

Dr K Oshiga – Clinical Lead

Felicity Greene – NHUC Executive

Chris Stark – Director of Nursing





The Hampshire  
Clinic

## Endoscopy Services

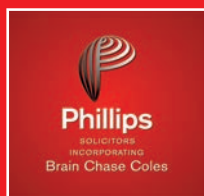
Our Jag accredited Endoscopy Suite is recognised for delivering high quality, safe and effective care to patients.

Patients are treated by a network of specialist consultants including gastroenterologists, colorectal surgeons, general surgeons, urologists and a nursing team. We provide exceptional levels of patient care and support to their families.

BMI The Hampshire Clinic  
endoscopy unit is accredited by

# JAG

Joint Advisory Group  
on GI Endoscopy



## WEDDING DELAYED? DON'T FORGET TO SORT OUT YOUR WILL



Claire-Marie Selwood

For those who made plans for their wedding or civil partnership this year, there is little doubt that the coronavirus has caused serious disruption.

Understandably, many couples have decided to delay their special day until next year.

Although it does not sound very romantic, it is worth remembering that a marriage or civil partnership is a contract, which legally recognises your spouse or civil partner.

Couples who live together but who are not married or in a civil partnership are at a disadvantage as there is very little provision for cohabiting partners should one die.

Claire-Marie Selwood, who is a Wills and Probate Solicitor at Phillips Solicitors incorporating Brain Chase Coles explains: "Despite what many people think, there is no such thing as 'Common Law Marriage'."

"If you die without a Will, your estate will be governed by the Rules of Intestacy, and your life partner/cohabitee will not be classed as your next of kin. The Rules of Intestacy will determine how your property is divided and distributed

irrespective of the number of years you have lived together. This could result in your estate being divided amongst your surviving family members to the exclusion of your life partner/cohabitee and this may not be what you would want to happen."

"Therefore, I would strongly advise cohabiting couples who are postponing their wedding or civil partnerships to make a Will."

Ordinarily, a Will made prior to marriage is automatically revoked once the marriage has taken place unless the Will is explicitly made in contemplation of that marriage.

"We can easily arrange for a Will to be drafted with a clause that incorporates the intention to marry or form a civil partnership. This means you don't have to wait until after you are married to make your Will," said Claire-Marie.

"They provide clarity and peace of mind. If you are not sure when your wedding of civil partnership will take place, you can use the time in the lead up to your delayed nuptials to make suitable provision for your future spouse or civil partner."

For more information about making a Will please contact Claire-Marie Selwood by calling 01256 854622, emailing [claire-marie.selwood@phillips-law.co.uk](mailto:claire-marie.selwood@phillips-law.co.uk) or by visiting [www.phillips-law.co.uk/wills-probate](http://www.phillips-law.co.uk/wills-probate)

## Sainsbury's

### Our Values Make us Different

#### Covid-19 Coronavirus Update

We'd like to extend a huge thank you to customers following the latest government guidance for the wearing of face coverings whilst shopping in our store.

To clarify, colleagues will not be challenging customers who aren't wearing a face covering, as we recognise that many customers are included in the exempt list from wearing one.

Sainsbury's were the first supermarket to adopt the 'Sunflower Lanyards' which many of our customers, and indeed colleagues, wear to indicate they have a hidden disability.

We continue to monitor the number of customers within the store and our team of greeters at the front of the store continue to enjoy welcoming you to Kempshott.

#### Click and Collect

We've seen a huge uptake in customer demand for our popular Click and Collect service in the car park. Typically, over 100 collections are made each day from the two vans.

If you are at all nervous about shopping within the store, why not give the service a try?

You can book slots during three periods during each day and, our colleagues will bring the shopping to your car for you to unpack and leave.

#### Smart Shop

Similarly, we continue to see more customers use our smart shop devices to complete their shopping. This not only minimises the number of times your products could be handled but, the handsets provide you with a running total of your basket.

Our Smart Shop hosts will guide you through any queries you may have.

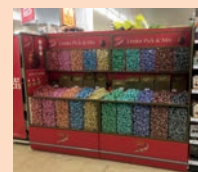
#### Nectar

We're updating Nectar in a huge way during September. If you haven't already downloaded the new Digital Nectar App to your smart-phone, now is the time.

Keep an eye out within the store for more details.

#### Lindt Chocolates

We've added a new 'Pick and Mix' Lindt Chocolate offer, which can be found in Aisle 11



#### Store Refit

During the next few weeks you'll start to see the store undergo a number of exciting new features and changes.

We realise that any change we make to the store layout can be confusing for our customers, so we'll have a team of colleagues to guide you through all the changes.

As part of this refit, we'll be opening our café at the end of September with a new range of offers as we head into the Autumn.





### Showroom

The old Station Andover Rd  
Oakley Basingstoke RG23 7HA  
Tel; (01256) 782070

OPEN 9am - 5pm MONDAY - FRIDAY CLOSED WEDNESDAY

SATURDAY 10am - 4pm

**VINYL, WOOD, CARPETS, LAMINATE,  
FURNITURE FOR THE DINING ROOM, LOUNGE, BEDROOM  
AND STUDY**

**Range of Accessories and  
Hand Made Jewellery.**

[www.oakley-furnishing.co.uk](http://www.oakley-furnishing.co.uk)



Many Items in stock for Fast Free Delivery

### CARPET EDGING SERVICE

**ALSO AVAILABLE**

**Rugs Made Your size**



British made Beds Back on Show Free Delivery Approx 1 week



**Basingstoke**  
water softeners

*A truly local company, improving the quality of  
the water in this area for over 25 years*

**Call us on: 01256 703346**

Proud members of  
**Checkatrade.com**  
Where reputation matters

**UKWTA**

**iphe**  
INDUSTRIAL  
ASSOCIATE



This is a **very hard water area** so you'll know about scaled  
up kettles, showers & taps. The build up of scale on heat  
exchangers, boilers & appliances causes costly breakdowns.



Then there's the constant cleaning, money spent on de-scalers  
& chemicals and dry-skin & **Eczema** aggravated by hard water.

**Block Salt  
Delivery**

**10 Year  
Guarantee**

Call us to book a site survey - We can show you our  
softeners, discuss your installation requirements  
and give you some facts & figures. We do not  
hard sell & will be happy to give you information.

**Rent a softener for £39.96 per month**

*Eliminate hard water in your home - for good*

**TWINTEC**  
**Kinetico**  
home water systems



[www.basingstokesofteners.com](http://www.basingstokesofteners.com)

Est.1987



## FAVOURITE RECIPES FROM CAFÉ IN THE PARK

### Carrot cake recipe

These taste truly delicious and they're a great way of showing children from 10 and 11 upwards how to use a vegetable to create a mouthwatering cake!

- Serves 16
- 25-30mins to prepare and 25mins to cook

#### Ingredients

- 250g (8oz) carrots
- 200g (7oz) sugar
- 150g (6oz) margarine
- 200g plain flour
- 2 tsp cinnamon
- 2 tsp baking powder
- 2 large eggs
- 120g (4oz) sultanas

#### Method

1. Ask an adult to preheat the oven to gas mark 6, 200°C or fan 180°C, before they top and tail the carrot.
2. Peel and grate the carrots into a bowl.
3. Add the sugar and margarine and mix all the ingredients together. Sift the flour into the bowl, along with the baking powder. Add the cinnamon.
4. Crack the eggs into a bowl and beat it before adding it to the cake mixture.
5. Add the sultanas and stir again. You could try swapping these for other dried fruits like cranberries or apricots.
6. Divide the mixture equally into two 7-8 inch cake tins
7. Ask an adult to place the carrot cakes into the oven to bake for 25 minutes until they're golden and piping hot throughout.

8. Ask an adult to remove them from the oven and allow them to cool. They should bounce back when you press the top with a finger and a skewer inserted into the middle should come out clean with no raw cake mixture on it.
9. Decorate however you like – children can get really creative here!



## RESTAURANT REVIEW

### RABBITER EATS OUT TO HELP OUT

Free at last from shielding there then arises a question of whether we have become accustomed to being kept a virtual prisoner in our homes. Have we become institutionalised? A few tentative steps eventually allowed us to try out the government's latest support package for the hospitality industry.

So off we went to Newlyn's Farm Shop near Odiham with the intent of having our first lunch out since the middle of March. Unfortunately, it was a Saturday and despite the discount incentive not being available after Wednesday there was a cinema queue waiting outside on the field clearly keen to enjoy a lunch. The alternatives were to either go elsewhere or go into the shop for a few items we had not realised we needed.

Emerging thirty minutes later the dining queue had been swallowed up with many eating at tables outside on the decking. We stood by the notice board that told us to wait to be seated and then were interviewed by a pleasant young lady requiring one of our names and a phone number and advised that we were allowed ninety minutes on the premises.

Inside, the place had at least half of the tables removed which meant that there was more than the standard two metres

between diners, but it meant that there was no buzz about the place. Madam and I both decided to have fish and chips which came with pureed peas. The condiments were all prepacked individual sachets to reduce the potential of cross contamination. The waiters all wore masks and rubber gloves.

Because we have been conscientious about our diet during the lockdown our lunches have consisted of only fresh fruit and cheese with the consequence that what was on our plates was too much for our reduced waistlines. Being a potential trencherman, it was sacrilege not to leave a clean plate.

Not having seen friends from Reading for five months we selected the Queens College Arms at Pamber End as a suitable half-way house. Madam phoned to make a lunchtime booking, outside please, but they do not open on Mondays which means that the government incentive of 50% discount up to £10 per diner is only available for two days, so Tuesday was selected.

Our friends arrived first and were surprised to be told to pick any outside table. They were both on cold water and Madam had her usual diet tonic, ice and a slice and I had a pint of Peroni lager.

Being a Hall & Woodhouse establishment presented us with their extensive menu selection. Our friends had chicken Caesar salad and a small steak and fries. Madam had the same steak and I had their famous Steak and Tanglefoot pie which sat on creamed mash and with red cabbage.

Three of us had the raspberry frangipane pie while one friend had vanilla ice cream, followed by three iced coffees. The bill was reduced by £40 so we all felt satisfied that we had done our bit to assist the government help the hospitality industry get back on its feet.



The drinks waitress wore rubber gloves and the waiter bringing the food a mask but if any sanitisers were available then they were not on view for the surprisingly few outside diners.



J&K Care Specialists was established in May 2001 and has become one of the leading specialist care agencies in the Basingstoke area, building a reputation as a professional, friendly and caring service.



*"A new approach to care"*



We supply staff to the following Client groups:

- Adults with learning disabilities
- Children with learning disabilities
- People with physical disabilities
- People with mental health needs
- Sensory Impairment
- Dementia
- The Elderly

Come and join our friendly team at J&K Care Specialists. We offer training, great rates of pay, travel time, mileage, pension, and uniform. Drivers preferred but not essential.



Call: 01256 300099

Email your CV to:

[lizzie@jandkcarespecialists.co.uk](mailto:lizzie@jandkcarespecialists.co.uk)

Or visit our website

[www.jandkcarespecialists.co.uk](http://www.jandkcarespecialists.co.uk)

for further information

## UPDATE ON IMPROVEMENT WORKS

Over the summer and into autumn works will start to take place across Beggarwood Park. This follows our consultation at the end of 2019 when we asked you what improvements you'd like to see in the park.

Delays owing to COVID-19 have put many of these improvements on hold but we have now started to phase in the works, starting with the gravel footpath next to the community centre, allowing easier access across the park.

Further works will include adding new seating, bins and information boards around the park, up grading the BMX track to a new larger size pump track, improving the play area with additional equipment and fencing, and providing

a new exciting 'wild zone' in place of the maze.

Additions to the play area to allow for more inclusive play.

New layout and surfacing to the old BMX track to make it suitable for all users.

These improvements have been designed in response to the consultation, in order to enhance use of the park while still protecting the wildlife and nature that is important for Beggarwood Park as a Local Nature Reserve (LNR).

Please adhere with the Government's COVID-19 guidance when visiting our parks and open spaces. Once projects begin at Beggarwood Park, please keep away from the construction site and



leave our contractors a safe space to work.

**Clr Dan Putty JP**

## PROTECT THE NORTH HAMPSHIRE DOWNS



STaNHd, Stand up for the North Hampshire Downs has been set up to protect this countryside from the speculative concept of "Upper Swallick Garden Village" that has been submitted to Basingstoke and Deane Borough Council by the Trustees of the Portsmouth Estate. The concept would consist of at least 2,500 houses covering a huge area of rural land that would have a devastating effect on this countryside and farmland, engulf the village of Cliddesden and the surrounding villages as well as ruining easy access to the countryside from Basingstoke.

Traffic levels would rise to unacceptable levels accessing Basingstoke and the M3 junctions on the A339, B3046, Wood Lane and Garlic Lane; rat runs would be created on smaller roads in the surrounding areas.

The rolling hills and views of this countryside are appreciated by many living in Basingstoke and the surrounding area who enjoy walking, running and cycling along the lanes and footpaths that cover this beautiful landscape. This vital outdoor space is important for our mental and physical wellbeing, as many of us discovered during lockdown.

The land is farmed and should remain as farmland, it plays an important role providing crops, flood protection, carbon capture, helping to prevent climate change, sustain the environment and support great biodiversity.

This development would be the size of central Basingstoke and we hope that it will always remain as pristine countryside for future generation.



### Once this farmland is gone, it is gone.

If you would like to help this campaign to PROTECT this landscape please see our Website: <https://www.stanhd.com/> and sign the petition, over 2,000 people have signed in a week and it would be great to reach 4000 and more.

Please follow / like /share us on Facebook. <https://www.facebook.com/Standupfornorthhampshiredowns>

Also please write to your local councillors at Basingstoke and Deane Borough Council informing them of your opposition to this development. <https://democracy.basingstoke.gov.uk/mgFindMember.aspx>

## THE CAGE CAMPAIGN

**The CAGE campaign gets off to a hot start!!!**



Outline planning permission will be sought soon from Basingstoke and Deane Council for a warehouse site to be built covering 82 acres sandwiched between the M3 and A30 at junction 7. Newlands Developments has not named the occupiers but potentially the number of vehicles using the site, lorries, vans and cars, could be huge and will have an impact on all the local roads.

CAGE wants the future of this area west of Basingstoke to be considered in a long-term master plan which takes into account the environment, infrastructure and impact of possible pollution on existing and future housing.

The farmland in the North Hampshire Downs vicinity provides wonderful open recreational spaces for walkers and cyclists that have been especially valued during these times of lockdown due to Covid 19.

Readers are invited to visit the website to register their interest in the campaign.

[cleangreenenvironment.org](https://cleangreenenvironment.org)





# BACK TO YOUR FUTURE

*Distancing  
and screens  
throughout  
the Club*

**Nobody knows what the new normal  
will look like. We just remember  
loving the old one.**

So, Beechdown has remodelled itself to provide all the fun of pre-Covid, with all the best procedures of the new world. Imagine doing a floodlit Body Attack class on our outdoor astroturf studio, or a Spin Class under the stars, or a few sets in the alfresco gym. Or stay indoors and feast yourself on all the fabulous fitness facilities we've always had, then take a swim in our glorious pool. Want to know more?

**Watch the video on our website, or come to the  
Club and have a guided tour.**



**beechdown**  
health and fitness

**beechdown.co.uk**

 01256 36 22 22

 Winchester Rd  
RG22 4ES

## SHOOTING STARS

At Shooting Stars Nursery School we allow children to not be afraid of their emotions but to embrace them, we let them know it's ok to be sad, angry and excited and we don't tell them to simply stop and calm down. Instead we sit and join them, we give them time, we show them compassion and understanding and we role model. Sharing books, words, Makaton and puppets offers our children another way to explore their emotions and express exactly what they need to. In the uncertain world we live in today we need to give children the skills at a young age so they have the foundations of good mental health as they continue their learning journey.

Our Shooting Stars will *reach for the stars and shine!* We are so excited that spaces are filling up for September and January so why not come and have a look at what all this means in reality! Social distance show rounds available at the end of each day! Call us to arrange 07900 600243

## NEW £4MILLION PUB SET TO OPEN IN SEPTEMBER

Hall & Woodhouse has confirmed that its new Beggarwood pub, The Holly Blue, will open to guests this September.

The leading independent regional brewer acquired the site last year and has invested more than £4million to create a landmark building in a fabulous setting, overlooking parkland.

Construction work on the site was temporarily paused during the UK lockdown, leading to a delay in the original opening schedule, and the pub is now due to open its doors in September. Mark James, Property Director at Hall & Woodhouse, commented: "Although we were aiming to welcome guests to The Holly Blue a little earlier, we are confident that the new pub will be well worth the wait. As a business, we are dedicated to bringing a beautiful pub to Beggarwood and provide guests with a hospitable and a quality experience for the whole community to enjoy safely."

The Holly Blue's name and design is centred around local heritage with a focus on Beggarwood Park's butterfly ecology and biodiversity programme.

The Holly Blue features four key areas for guests to enjoy, including a relaxed 'Badger's Den' complete with cosy nooks and crannies as well as a raised log burner where visitors can enjoy a cup of Colourful Coffee in the warmth.

The pantry is an informal space for drinking or casual dining which showcases hard-wearing and timeless limestone floors, as well as reclaimed timber features.

More formal dining takes place in a barn-style area, with high ceilings and impressive reclaimed brickwork. A large fireplace and chimney lined with old riding saddles belonging to current company steward, Mark Woodhouse, takes centre stage in the space.

In warmer months, guests will be able to enjoy a refreshing pint of Badger Beer in the pub's sizeable veranda and garden.

Hall & Woodhouse is an independent Dorset family company that brews award-winning Badger Ales and runs an estate of high-quality pubs in the south of England.

Please visit [www.hall-woodhouse.co.uk](http://www.hall-woodhouse.co.uk) for more information.

## NEW SCHEME AIMS TO HELP THE BOROUGH'S YOUNG TREES THROUGH THE DRY SUMMER MONTHS

People in the borough are being encouraged to join a new initiative to help water young trees across Basingstoke and Deane during the summer months.

'Water Me' gives residents the opportunity to help support Basingstoke and Deane Borough Council's watering programme by providing the trees with additional water when the weather is dry. Each tree will have a label attached to it and residents are encouraged to find their nearest one and to help to water it – preferably using recycled water such as washing up or rain water.

The council plants a number new trees every year and waters them during their first year of growth. This year there are 183 trees included in the council's watering schedule.



**Sherfield Village Market**

**We're back!**

**Local food, produce and crafts**

**10:00 - 1:00**

**Free entry**

**Next market 20th Sept**

**Sherfield Village Hall RG27 0EZ**  
Charity No: 1178256  
[sherfieldvillagemarket.org.uk](http://sherfieldvillagemarket.org.uk)

designed by @goodsterns



## COUNCILLOR'S UPDATE

As the nation struggles slowly back to some kind of normality after the **COVID** lockdown, Hatch Warren and Beggarwood continues to operate with some restrictions.

**BEGGARWOOD SURGERY** is using a triage system where patients are invited to submit information electronically and have a virtual consultation on the first instance. This has actually proven to be popular in many ways, and I would not be surprised to see this continue as part of 'new normal'.

The **PORTSMOUTH ARMS** has re-opened but the eagerly anticipated **HOLLY BLUE**, the new pub/restaurant, is planning to open this month.

The **BEGGARWOOD CAFÉ IN THE PARK** has re-opened on Friday, Saturday and Sunday lunch-times offering a take-away service from the park side of the buildings. Sadly, the outside picnic tables have been vandalised so this welcome facility was not available during the period of glorious weather. I hope the idiots who did this feel ashamed of themselves.

The **HATCH WARREN COMMUNITY CENTRE** remains closed, on Government orders, and it is worth watching their website for details of forthcoming events that may, or may not, go ahead.

### And in general news ...

Work has started on converting the old Argos store in the Hatch Warren Retail Park into the new **LIDL**. At the time of writing I have not seen a planned opening date.

**BIOGEN** have been making changes to the biofilter at their Anaerobic Digester site across the motorway. Hopefully the improvements will stop any future odour emissions. Julian Jones,

from Dummer, has stepped down as Chairman of the Liaison Group after many years of valued service.

**DEVELOPMENT** affecting Hatch Warren and Beggarwood is set to accelerate. Work has started at **HOUNSOME FIELDS** and the Golf Course application has been approved. In addition, an application has been submitted for a distribution centre near M3 Junction 7. Questions are being asked about whether this will provide the sort of jobs that Basingstoke needs and whether it might compromise the building of new hospital across the road if, indeed, that is the site chose by the Hospital Trust.

The Borough Council is talking about producing a **DEVELOPMENT PLAN** for the South-West of Basingstoke. This is prompted by the potential huge amount of development that could take place during the next Local Plan period.

The **SOUTH WEST ACTION GROUP (SWAG)** is looking for a new Chairman. Given the planning issues on the horizon, many people will consider it important to have a functioning pressure group to work with the Councillors in defending the interests of the area.

The Highways Agency has withdrawn its objection to a **MOTORWAY SERVICES AREA** off the roundabout at M3 Junction 6. This does not amount to a go-ahead. If the J6 proposals were to proceed, I think it would make it highly unlikely that the alternative proposal opposite Hatch Warren could then go ahead.

A post that defends the field off **DANEbury ROAD** has been removed. It was part of the defences against illegal trespassing and it has been reported to the Borough Council.

**Stephen Reid**

County Councillor

Basingstoke South West 07976 310206

## BASINGSTOKE - OLD BASING U3A THIRD AGE TRUST

### Introduction

Basingstoke - Old Basing U3A Third Age Trust has been running for 21 years, with more than 700 retired or semi-retired members, who want to develop their interests, make new friends and enjoy themselves. We have 40+ very friendly and informal groups to choose from, covering sports to music, games to crafts, arts to science and you can take part in as much or as little as you want. We offer UK/overseas excursions and holidays and hold a monthly meeting for all members, often with a guest speaker:



### What we've been doing during lockdown

We continue to thrive during lockdown, running an ever increasing number of groups. Croquet, Cycling and Walkers groups now operate as normal, with small numbers participating. Line Dancing group has started up again indoors, with limited numbers; Tables Tennis and Badminton will follow shortly. Strings and Things, Ladies who Lunch meet in members' gardens, subject to number restrictions. A number of groups, including History, Science & Technology, Art & Craft, Literature, Environment, Sewing and a new Gardening group use online technology to share work, present/discuss topics of interest and catch up.

### Find out more

If you would like to find out more about us, then please follow this link. <https://www.basingstokeu3a.org/> or you can ring the national office on 020-8466-6139, who will re-direct you to us. You can try out as many groups as you wish over the rest of 2020 for only £5. We're waiting to hear from you!

## BASINGSTOKE VOLUNTARY ACTION

### B&D Lottery Launch...

The BanD Community Lottery will be launched in September 2020 and anyone can buy a ticket for the draws! A ticket gives you the chance to win prizes of up to £25,000 for just £1 per week. Every ticket has a 1 in 50 chance of winning a prize every single week!

[www.bvaction.org.uk](http://www.bvaction.org.uk) | [contact@bvaction.org.uk](mailto:contact@bvaction.org.uk)

The Orchard, White Hart Lane, Basingstoke, Hampshire RG21 4AF



## Registration open now for places at our After School Club

THE ONLY PROVIDER OF A FRESHLY HOME COOKED MEAL

PASSIONATE, DEDICATED & LONG STANDING TEAM

ARTS/CRAFTS AND GAMES

FRIENDLY, SAFE, MODERN ENVIRONMENT

HEALTHY WALKING BUS FROM SCHOOL

EASY ACCESS TO AN OUTDOOR AREA INCLUDING LARGE FIELD, ENCLOSED PATIO AND SPORTS COURTS

FULLY QUALIFIED, EXPERIENCED DBS CHECKED STAFF

*In the heart of your community!*

**HATCH WARREN ASC**  
Established 2013  
**AFTER SCHOOL CLUB**

Price per session £11.60

Flexible bookings & extra sessions can be accommodated

Contact us:  
[odette@hatchwarren.org](mailto:odette@hatchwarren.org)  
 01256 811262  
[www.hatchwarren.org](http://www.hatchwarren.org)

Hatch Warren Community Centre,  
 Long Cross Lane, Basingstoke, RG22 4XF  
 OFSTED EY 491834  
 Registered Charity Number 1161117

## Café in the Park

Open Friday - Sunday from 10am - 2pm

Takeaway service only

Delicious homemade cakes, hot and cold drinks, ice creams & breakfast baps!



## BOOK ONE OF OUR CHAPERONED COACH TRIPS AND CELEBRATE THE OPENING OF LONDON THEATRES IN STYLE



**THUR 21ST JAN 2021**



**FRI 12TH FEB 2021**



**THUR 21ST OCT 2021**

*Book your tickets now via email*  
[office@hatchwarren.org](mailto:office@hatchwarren.org)

Registered Charity Number 1161117

find us on | facebook

Hatch Warren Community Centre

Tel: 01256 811262  
 Email: [office@hatchwarren.org](mailto:office@hatchwarren.org)  
 Web: [www.hatchwarren.org](http://www.hatchwarren.org)  
 Following us on Twitter @hatchwarren



## Events are planned subject to government restrictions being lifted and The Warren reopening

### Programme 6.00 to 7.45pm

4th Sept	Table tennis, Bingo, chocolate bar milkshakes
11th Sept	Football tournament, Just Dance and waffles
18th Sept	Laser tag, tile painting and ice cream sundaes
25th Sept	Manhunt and hair chalks
2nd Oct	Dodgeball, stress ball making and donuts
9th Oct	Tile painting and refreshing mocktails
16th Oct	<b>FUNDRAISING NIGHT</b> - Zorbs, Sumo Suits and much more!!
23rd Oct	NERF fight, henna and churros

**FREE ENTRY FOR ALL YOUNG PEOPLE**

### Health Hub Programme - 8.00 to 9.30pm

We are open Fridays 8.00-9.30pm for school years 9 and above. If you want to play pool, FIFA or just hang out then come on down. We sell food and drinks. We can also offer you free confidential advice on a whole range of issues including contraception and pregnancy testing. We run focused information nights for 13-18 year olds, our next nights are:

**Friday 4th Sept - Eating Disorders Awareness**

**Friday 2nd Oct - Healthy Relationships**

If parents have questions about the topics we discuss please feel free to contact us.

### Fundraiser Reminder

You may remember that Storm Ciara took her temper out on our lovely gazebo. This wasn't just any gazebo! It was a metal structure that is



used year-round and helps us allow more young people into the centre, without giving up any of the fantastic crafts we offer. We are holding a fundraiser night towards buying a new one for our young people on **Friday 16th Oct**. There will be Zorb Balls and Sumo Suits for a donation of £1 a turn, as well as tattoos and nail painting at £1 each. We are also going to be holding a Cake Sale that night with many delicious cakes available to buy! A **big thank you** to everyone who has donated towards replacing the gazebo already. We are overwhelmed by people's generosity.



We welcome the sunshine whilst we are all locked down, in these uncertain times. We understand life is not how it should be and this may cause additional worries.



For any support needed by the young people while the youth club is closed, we can signpost you to <https://www.themix.org.uk/> or <https://youngminds.org.uk/> in particular if support with anxiety or mental health is needed.

Reach out and remember the good times at The Warren. Stay active and stay safe! Watch out for any updates on reopening on Facebook.



## OLD DOWN AND BEGGARWOOD WILDLIFE GROUP

As the covid crisis continues both sites remain popular with visitors and it is lovely to see that the sites are appreciated and enjoyed. The play areas are busy and Beggarwood's have been particularly well used. I hope that you are all noticing the beautiful wildflowers and insects, particularly butterflies, on both sites. A

rare sight on Beggarwood last month was a *chalkhill blue* butterfly – bit bigger than the *small blue* butterfly which is prolific on Old Down. Another rare sight, this time on Old Down, was a *clouded yellow* butterfly.

There are always lots of little brown birds (LBJ's) about on both sites. Most common are *house sparrows* but within the same habitat there other LBJ's – such as *dunnock*, *wren*, *greenfinch* and *goldfinch*. From a distance, the *dunnock* could easily be overlooked and taken to be a sparrow. *Dunnocks* are greyer and less marked. They tend to stay lower down in hedges and have a lovely song, unlike the sparrow which tends to just 'chatter'. The *goldfinch* is a bit smaller than the sparrow but in no way is it brown; it has beautiful colourful markings; gold, red, white and black and is one of the UK's most colourful birds. They are often in small flocks, making a high pitched twittering 'song'. See photos.

The other day on Old Down, I was near a toddler (age only 3 or 4) who stopped at the top of the grassy path leading from the wooded path and said (to his mother) – "I like this view". And he wanted to carry on down the grassy path so he could see the view of the fields and trees in the distance. That was so cute and wonderful – at such a young age to notice, appreciate and admire his surroundings. It is indeed a wonderful view from Old Down. So Council members and officers – please, please look after these wonderful places and spaces for the coming generations to enjoy and wonder at.

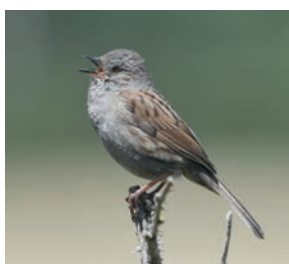
The maze on Beggarwood is due to be removed (may have been so now) – deemed by the Council to be a risk – and replaced by a wild area. The removal should have started at the end of July but was delayed. Unfortunately there is no definite schedule for putting in the wild area.

**Work Parties** – We are hoping that work parties will be starting in October – now that the Council has sorted out PPE issues. Please check the group's website and Facebook page (Old Down and Beggarwood Wildlife Group) for definite dates. Please also look at our Facebook page for regular photos of the sites and the wildlife.

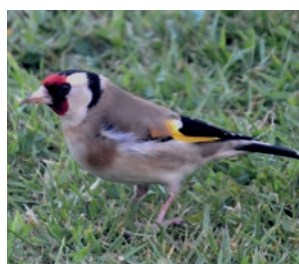
[www.olddownandbeggardwood.org.uk](http://www.olddownandbeggardwood.org.uk)  
Email: [odandbwd@gmail.com](mailto:odandbwd@gmail.com)



Male and female sparrow



Dunnock



Goldfinch



**CRANFORD DESIGN**

Providing bespoke architectural design

- Extensions, alterations & new builds
- Loft and Garage Conversion
- Domestic & commercial project solutions




[www.cranforddesign.co.uk](http://www.cranforddesign.co.uk)

For free consultations in your home or business, call or email us...

☎ 01252 872657    📠 07525 064570    ✉ [info@cranforddesign.co.uk](mailto:info@cranforddesign.co.uk)




**NJP Heating Services**    Tel: 01256 782202  
Mob: 07717 741999

Specialising in:

- Condensing boilers - supplied and installed
- Powermax and Boilermate repairs
- Water softeners supplied and installed
- Power flush heating systems
- Unvented hot water cylinders
- Plumbing

[www.njpheating.com](http://www.njpheating.com)

Trading Standards Approved    Free estimates and no call out charge

**DMC KITCHENS & CARPENTRY**

Tailoring Craftsmanship to Optimise Space in Your Home

- Kitchens
- Bespoke Made to Measure
- Fitted Wardrobes
- Staircase Refurbishment
- Doors
- General Joinery

Call Darren : 01256 350527  
Mobile : 07876 775244

[www.dmckitchensandcarpentry.co.uk](http://www.dmckitchensandcarpentry.co.uk)





## HATCH WARREN W.I.

Hatch Warren W.I. held a Zoom summer social meeting on Thursday 6th August. What would we all do without being able to use social media. With light refreshments and drinks we join in with 'Would I lie to You' our version of this game. Members had to come up with three different stories only one being the truth, we had wonderful tales of broken limbs, falling into the skip with an old carpet, campsite yetis, losing a heel off a shoe on the escalator, football and finding old bomb shells in the garden shed, and many more really funny tales. We then had to vote on which one we felt was the truth. Sometimes the true ones were the most obscure.

Carrying on from our July Zoom meeting we have set up a Genealogy group for members interested in tracing their family tree, this is going really well. We are still having our Zoom coffee morning once a week. One member has shared that she is making botanicals natural oils from herbs and flowers in her garden.

We are looking to have a Zoom meeting on September 3rd where our speaker for the evening will be Tony Cross 'A History of Hampshire in 10 objects'. At present we do not know when we will be able to return to our meetings at Hatch Warren Community Centre.

For more information on our W.I. please contact our President Lynette on 07824 535868, we all look forward to the time we can come together and meet in person, until then keep safe and well.

## • SPIRITUALLY SPEAKING •

### • Questions?

• We are at the beginning of a new academic year when some children will be going to school for the first time, others will be changing classrooms and teachers and many will be heading off to college or university. But this year will feel very different to last year due to Covid-19 and we don't have any answers for how long it will around.

• We have been through a time with so many unanswered questions. You may be asking a whole range of questions too. In the Bible many questions are asked, for example Jesus asked his disciples "who do people say that I am?" He then asked his disciples, "But who do you say that I am?" Asking questions is how we find out about ourselves and the world around us. Sometimes it can feel quite daunting.

• Immanuel and St Mark's churches will be running a six week course based around some key questions that people have been asking. It is called Puzzling Questions and the aim is to provide a space for you to explore with others some of life's deeper questions. The course covers the following questions as set out below.



An opportunity to explore some of life's deeper issues.



Who am I?

What is God like?

What happens after I die?

How can I be happy?

Why is there suffering in the world?

What is the spiritual world, and how does it impact my life?

Dates: 7th October  
14th October  
21st October  
4th November  
11th November  
18th November

Time: 7:30 - 9pm

Venue: The course will be online using Zoom.

Contact: St Mark's church parish office on 01256 840502 to book a place.



Puzzling Questions

Immanuel Church is open for a service of communion every Sunday at 10am. We are meeting in the school hall at St Mark's primary school so we can be socially distanced. There is no need to book, but you will be required to wear a face covering. At the time of writing this article we are not able to sing in the service but we are playing music. We would like to invite you to come along to a service. I appreciate that not everyone will feel able to come to the church on a Sunday so our online service Worship@Home will continue and can be found on the church website or Facebook page.

• **Rev May** 07922 516761

• revmay@immanuelhwb.co.uk www.immanuelhwb.co.uk

## J Cook Landscapes

Maintenance & Clearance  
Decking & Fencing  
Patios & Driveways  
Garden Design & Build



Call now for a free quote:  
01256 412723 / 0771 7214521  
e: [info@jcooklandscapes.co.uk](mailto:info@jcooklandscapes.co.uk)  
[www.jcooklandscapes.co.uk](http://www.jcooklandscapes.co.uk)

## Your local church in Hatch Warren



Lively worship every  
Sunday at 10.00am.  
Weekday activities.

### Immanuel Church

Church Centre, St Mark's School, Danebury Road, Hatch Warren

All Enquiries to: 07922 516761  
[www.immanuelhwb.co.uk](http://www.immanuelhwb.co.uk)

## RABBITER CONTACTS:

**Editor:** editor@therabbiter.biz

**Advertising Manager:**

Nick Overton: 01256 880770

advertising@therabbiter.biz

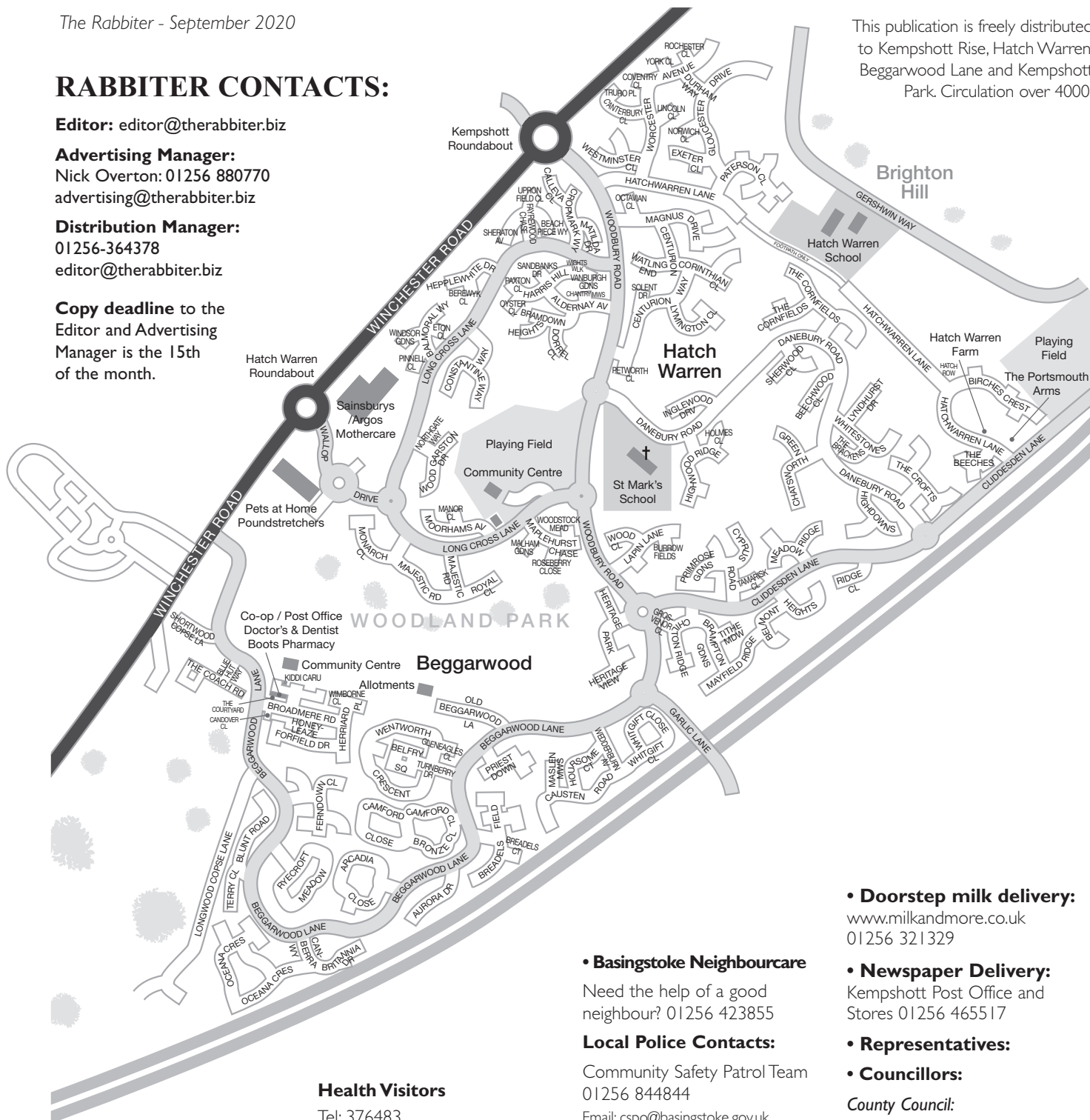
**Distribution Manager:**

01256-364378

editor@therabbiter.biz

**Copy deadline to the Editor and Advertising Manager is the 15th of the month.**

This publication is freely distributed to Kempshott Rise, Hatch Warren, Beggarwood Lane and Kempshott Park. Circulation over 4000.



### • Health:

#### Doctors' Surgeries

Acom Health Partnership  
Western Way - Tel: 479747  
Mon-Fri 0800-1830

Broadmere Road Surgery -  
Tel: 396500

Mon-Fri 0830-1800  
(answermessage when closed)

#### Chemist

Boots Pharmacy Broadmere  
Road - Tel: 398927 Mon-Fri  
0900-1800 Sat/Sun closed  
Lloyds Pharmacy, Sainsbury's

#### Health Visitors

Tel: 376483

#### Child Health Clinic

The Community Centre - every  
Wednesday 10.30 - noon.  
All Welcome.

#### Dentist

Broadmere Road - Tel: 391391

#### • Library:

465102 - HCC mobile library  
every Tuesday evening St. Mark's  
CE primary school from 4.40pm  
to 6.40pm.

#### • Post Office

Co-op Broadmere Road:  
Sun-Sat 0700-2200

Kempshott Post Office and Stores  
01256 465517 Mon-Fri 0800-1730  
Sat 0900-1500

#### • Basingstoke Neighbourcare

Need the help of a good  
neighbour? 01256 423855

#### Local Police Contacts:

Community Safety Patrol Team  
01256 844844

Email: csp@basingstoke.gov.uk

Hampshire Constabulary 101

Crimestoppers 0800 555111

#### • Churches:

Immanuel C of E Church (in St.  
Mark's School, Danebury Road)  
10.00 a.m. every Sunday  
All enquires to: 07922 516761

Hub Community Church  
Every Sunday at The Apollo Hotel  
Contact Dan Wake or Margie  
Mendelsohn 01256 316010  
connect@hubcommunitychurch.org  
www.hubcommunitychurch.org

#### • Buses:

See opposite

#### • Doorstep milk delivery:

www.milkandmore.co.uk  
01256 321329

#### • Newspaper Delivery:

Kempshott Post Office and  
Stores 01256 465517

#### • Representatives:

#### • Councillors:

County Council:

**Stephen Reid**, 34 Centurion Way  
RG22 4TJ 320860

email: Stephen.Reid@hants.gov.uk

Borough Council:

**Rebecca Bean**, 12 Arcadia  
Close, RG22 4AJ 07506 570926  
email: cllrRebecca.Bean@basingstoke.gov.uk

**Terri Reid**, 34 Centurion Way  
RG22 4TJ 320860

email: cllr.Terri.Reid@basingstoke.gov.uk

**Dan Putty**, 1 Gloucester Drive,  
RG22 4PH 356650

email: cllr.dan.putty@basingstoke.gov.uk

#### • Member of Parliament

**Hatch Warren:**

**Maria Miller**

email: millerm@parliament.uk



## KEMPSHOTT CONSERVATION GROUP

**Meadow meanderings.** "It's been a funny year" is a common refrain for all sorts of reasons. In Down Grange Meadow, most flower species have had a fantastic year. After eight years or so, species seeded in our scraped areas are popping up all over the place, probably spread by wind and/or birds. At the beginning of August, the Council's biodiversity team visited the meadow when it was looking its best. We think they were quietly impressed with what they saw.

There are also a couple of new species, notably Betony (*Betonica officinalis*) and Clustered Bellflower (*Campanula glomerata*). Some Betony was plug planted at the end of last year in our dampest and shadiest spot because that's their favoured habitat. However, when walking round with the Council officers they also noticed some more on an open patch in full sun that we had not planted - that's a result! Some Nettle-leaved Bellflower (*Campanula trachelium*), which likes semi-shaded woodland edge type habitats, has also been planted. We have not bothered with trying to introduce its meadow cousin, the Clustered Bellflower, but it has appeared anyway.

It's also been a good year for day-flying moths. When doing a butterfly transect

right at the end of July, a Hummingbird Hawk Moth was recorded, the first report for the site that we are aware of.

There are more and more reports of deer in the meadow. At the beginning of August two of our members disturbed a female Roe deer that disappeared into the Spinney. We have deliberately tried to cordon-off the Spinney from human disturbance by blocking up entrances and making it as difficult as possible for the youths who used to frequent it for drinking, or worse, to gain access.

**It's in the bag!** We use ex-builders "Euro-bags" for all kinds of jobs around our sites, typically as "drag-bags" for collecting and moving arisings around. All our bags are showing their age and need to be replaced. If you have any spare one cubic metre bags you could let us have, we would be very grateful. Please contact Marion on (01256) 470171 and we will collect. Many thanks.

**For more information about our activities on Down Grange Meadow, please call Marion Wolstencroft on (01256) 470171. Alternatively, send an email to [kempshott-serve@tiscali.co.uk](mailto:kempshott-serve@tiscali.co.uk) or visit us at [www.kempshottconservationgroup.org.uk](http://www.kempshottconservationgroup.org.uk)**

## THE GREAT BRITISH SNAKE OFF

**Hampshire & Isle of Wight Wildlife Trust**  
Here are the UK's three species of snake.

### The biggest: grass snakes

The longest at well over a metre, grey-green colour with a black and yellow collar and dark eyes with round pupils. Found in areas with long grass often near water, feeding on fish, frogs, toads and newts. Our only egg-laying snake. Not venomous. Shy and may play dead if trapped and can release a foul-smelling liquid.

### The most misunderstood: adder

Our only venomous snake. Bites should always be immediately checked at a hospital. Found on heaths, woodland rides, and coastal dunes. Shorter than a grass snake, and are grey-brown with a distinctive zig-zag pattern along the back, and elliptical pupils in their bright red eyes. Females incubate eggs internally and give birth to up to 20 live young.

### The rarest: smooth snake

Very rare and secretive only found on a few sandy heaths in Dorset, Hampshire, Surrey, West Sussex and Devon. About 70cm long, slender and grey or dark brown, with dark markings along the back and round pupils. Not venomous and catch prey, lizards and small mammals, with their teeth and coil their body like a constrictor.

## BUS TIMETABLE

**No. 8 Services** – 8 via Buckskin and Kempshott Park.

Buses will leave Railway Station

**Monday to Friday:** 0536 0606 0621 0636 0651 0712 0724 0736 0748 0800 0812 0824 0836 0848 0902 0915 0930 0945 1000 1015 1030 1045 1100 1115 1130 1145 1200 1215 1230 1245 1300 1315 1330 1345 1400 1415 1430 1445 1500 1515 1530 1542 1554 1606 1618 1630 1642 1654 1706 1718 1730 1742 1754 1810 1825 1840 1855 1910 1940 2010 2040 2110 2140 2210 **2240 2310 2340 0010 (Thursday & Friday only)**

**Saturdays:** 0640 0700 0720 0740 0800 0820 0840 0900 0915 0930 0945 1000 1015 1030 1045 1100 1115 1130 1145 1200 1215 1230 1245 1300 1315 1330 1345 1400 1415 1430 1445 1500 1515 1530 1550 1610 1630 1650 1710 1730 1750 1810 1830 1850 1910 1940 2010 2040 2110 2140 2210 2240 2310 2340 0010

**Sundays:** 0810 0840 0910 0940 1010 1040 1110 1140 1210 1240 1310 1340 1410 1440 1510 1540 1610 1640 1710 1740 1840 1940 2040

Buses will leave Sainsbury's

**Monday to Friday:** 0531 0601 0616 0631 0646 0701 0718 0731 0742 0754 0806 0818 0830 0840 0852 0904 0916 0930 0943 0958 1013 1028 1043 1058 1113 1128 1143 1158 1213 1228 1243 1258 1313 1328 1343 1358 1413 1428 1443 1458 1513 1528 1543 1558 1618 1638 1658 1718 1738 1800 1812 1837 1907 1937 2007 2037 2107 2137 2207 2237 **2307 2337 0007 (Thursday & Friday only)**

**Saturdays:** 0648 0708 0728 0748 0808 0828 0848 0908 0928 0943 0958 1013 1028 1043 1058 1113 1128 1143 1158 1213 1228 1243 1258 1313 1328 1343 1358 1413 1428 1443 1458 1513 1528 1543 1558 1618 1638 1658 1718 1738

1758 1817 1837 1857 1917 1937 2007 2037 2107 2137 2207 2237 2307 2337 0007

**Sundays:** 0836 0906 0936 1006 1036 1106 1136 1206 1236 1306 1336 1406 1436 1506 1536 1606 1636 1706 1736 1805 1905 2005 2105

**No. 12 Service** – via Brighton Hill) (No Sunday service)

Buses will leave Bus Station:

**Monday to Friday:** 0705 **0817 / 0823** 0910 1010 1110 1210 1310 1410 1510 1610 1715 1815 1915 (**School days / Holidays**)

**Saturdays:** 0750 0910 1010 1110 1210 1310 1410 1510 1610 1715 1815 1915

Buses will leave Sainsbury's:

**Monday to Friday:** 0732 0937 1037 1137 1237 1337 1437 1537 1637 1742 1841 1940

**Saturday:** 0815 0937 1037 1137 1237 1337 1437 1537 1637 1742 1841 1940

## CLASSIFIED ADS

### ONE TO ONE PIANO TUITION.

Beginners welcome from 6yrs. Local, experienced 'ISM approved' teacher. 01256 333241 / 07774 631802 / janecleaver33@hotmail.com www.1to1musicutors.co.uk

### BRIDGES ELECTRICAL SOLUTIONS LTD

Fully Qualified, Insured and Registered Electrician.  
All Work Certified. Call 01256 471853 or 07879 298008.  
All Electrical Work Undertaken.

### GET A HEAD START ON NEXT YEAR'S EXAMS!

Expert Online Tutoring in Maths & Physics for students aged 11-18. Call 07749 409941 or visit [ehawtintutoring.co.uk](http://ehawtintutoring.co.uk)

**GARDEN MAINTENANCE** – LHS for all aspects of gardening. Friendly & reliable. DBS checked.  
[gardeninglhs@gmail.com](mailto:gardeninglhs@gmail.com) or 07792 725967.

### THE WORKSHOP FLORIST - FAUX FLOWERS

Faux flowers for weddings, stress free, 10 years experience.  
[Theworkshopflorist@gmail.com](mailto:Theworkshopflorist@gmail.com), [www.theworkshopflorist.com](http://www.theworkshopflorist.com)  
07557 524856

**Online booking of all adverts:**  
[www.fromthesmallestseed.co.uk](http://www.fromthesmallestseed.co.uk)

## HAVE YOUR SAY ON PLANS TO STAMP OUT DOG FOULING

People are being asked to give their views on Basingstoke and Deane Borough Council's plans to get tougher on dog owners who don't clear up after their dog.

The council is proposing to introduce a borough wide public spaces protection order taking a firmer stance on dog fouling in Basingstoke and Deane and is asking people to have their say.

Evidence gained by the council demonstrates that dog fouling in public spaces is a problem across the borough and therefore the council it is putting forward plans for a borough wide Public Spaces Protection Order for dog fouling bringing tougher penalties.

The draft order makes it an offence if people do not clear up after their dog has fouled in a public space and requires they carry with them an appropriate means to pick up their dog poo and transport it to a bin after their pet has fouled. If they do not comply they could receive an on the spot fine of £100 or be prosecuted at the Magistrates' Court.

Cabinet Member for the Environment and Enforcement Cllr Hayley Eachus said: "The majority of dog owners act responsibly and clear up their pet's mess but there are a minority that still do not and this lazy and selfish behaviour cannot be condoned. Dog mess is unsightly, it's dirty and it's dangerous and we have received feedback from residents where it has been a real issue for those using public open spaces.

"We are asking for people to feed back on our proposal to impose this order across the whole borough bringing a greater consequence to irresponsible owners and giving the council greater powers to enforce."

People can hear their say online until Friday 18 September at <https://www.basingstoke.gov.uk/PSPO-dog-fouling>

## CARS URGENTLY WANTED TOP PRICES PAID

CASH OR INSTANT BANK TRANSFER

**M & K AUTOS • BASINGSTOKE**

**Trading in your car or just  
need an Instant Cash Sale**

**CALL US FIRST**

- All cars and vans considered from £50 to £20,000
- For a fast, friendly professional approach please call Keith Lovelock on Basingstoke (01256) 477838 or 07785 594429

Your Local  
Buyer

8 DAHLIA CLOSE • KEMPSHOTT • RG22 5RQ



## JULY MEETING

In July we had our last Zoom meeting before the summer break. Our chosen book

was 'The Five' by Hallie Rubenhold which explores the lives of the women killed by Jack the Ripper. We all found this a very moving book and certainly not one we would have normally picked up. It brought the harsh living conditions of the Victorian times into focus and made us all realise just how much things have changed for the better over the last 100 years. The group agreed that the research involved in this book was excellent and the way the lives of the victims were brought to life was brilliant. We all really enjoyed it.

During the summer we have opted for light beach style reads. We are hoping to have the chance to pose questions to Rosanna Ley the author of 'From Venice with Love'.

We are all looking forward to a new year of interesting and enjoyable reading with our Bookworm friends. Our September read is the award winning 'Queenie' by Candice Carty-Williams followed in October by 'The Farm' by Joanne Ramos. Why not read along with us and follow Beggardwood Bookworms on Facebook. We hope to be back meeting in Café in the Park as soon as we are able to.



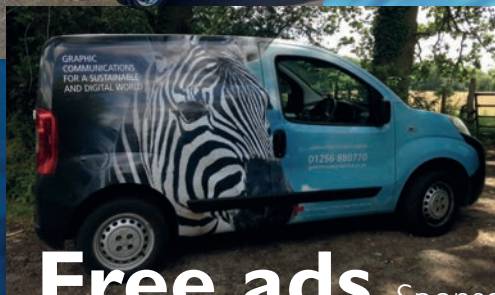




# Vehicle Graphics

Don't be shy. Get yourself noticed.

From as  
little as £99  
plus VAT



## Free ads

Sponsored by Greenhouse Graphics

Call Greenhouse Graphics on 01256 880770 or email [info@greenhousegraphics.co.uk](mailto:info@greenhousegraphics.co.uk)

### EPSON PRINTER REPLACEMENT INK CARTRIDGES.

Suitable for Epson XP models 30/102/202/205/212/215/225/305/312/315/322/402/405/412/415/422. 3 x 4 colour sets plus 2 additional black i.e. 14 cartridges. Only £25. Phone 07770 886521

Online booking of all adverts:  
[www.fromthesmallestseed.co.uk](http://www.fromthesmallestseed.co.uk)

Free ads can also be sent to [editor@therabbiter.biz](mailto:editor@therabbiter.biz)



### ASHBY AND AUSTIN PROPERTY SERVICES LTD

LOCAL FAMILY OWNED RESIDENTIAL LETTINGS AGENCY.  
EST. 2007 COVERING BASINGSTOKE, HOOK AND LOCAL AREAS.

#### SERVICES INCLUDE:

- RESIDENTIAL LETTINGS
- PROPERTY MANAGEMENT
- PRIVATE ROAD MANAGEMENT
- BLOCK MANAGEMENT OF APARTMENTS

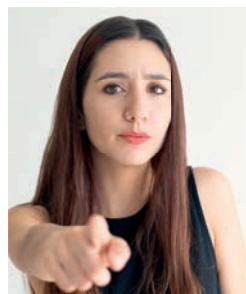
FIRST TWO MONTHS MANAGEMENT F.O.C FOR NEW LANDLORDS !

FOR MORE INFORMATION PLEASE CONTACT:

**JACKIE BIGNELL**

TEL: 01256 762906 MOBILE: 07726 902787

EMAIL : [jackie@ashbyandaustin.co.uk](mailto:jackie@ashbyandaustin.co.uk) W:[www.ashbyandaustin.co.uk](http://www.ashbyandaustin.co.uk)



### The Rabbiter NEEDS YOU

If you are fit and able to assist the Rabbiter with distribution or delivery of magazines during these difficult times your help would be greatly appreciated.

Please contact us by emailing:  
[editor@therabbiter.biz](mailto:editor@therabbiter.biz)



High quality and friendly MSK, Back and Neck Pain with professionals who listen

### Annette and Gordon Linscott

35 Years in Basingstoke – Specialists in Long Term or Recurrent Back and Neck Pain

If you have a long wait for treatment or other care has not worked come and talk to us

East Barn, Lychpit Centre  
01256 466 666

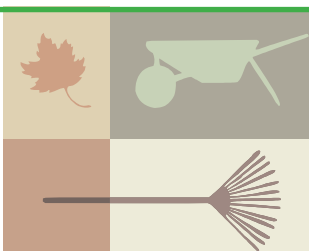
[www.spineteam.co.uk](http://www.spineteam.co.uk)

### Goslings Garden & Fencing Services Ltd

With over 20 years experience in all gardening areas.

T: 01256 332680 / 07973 523246

Email: [gozlisha@aol.com](mailto:gozlisha@aol.com)



Garden Maintenance (one-off / regular) • Mowing • Strimming • Hedge-cutting • Stump grinding • Fencing • Pruning • Patio's • Turfing ... and more

## WRITE NOW!

### Launch of the 2021 BMAF Creative Writing Competition

September sees the 59th launch of the annual Basingstoke Music and Arts Festival. The three Festival performance and Awards weekends aren't until March next year, but now is the time to start thinking about your entry to the Festival's Creative Writing competition. The entry deadline is Monday 14th December.

At that point, entries are sorted by competition category – articles, letters, poetry, sonnets, short stories, scripts and 'flash' fiction. After adding a unique ID number, the 'anonymous' adults and childrens entries are next sent to the competition's two independent adjudicators for review and marking.

As part of the entry fee, entrants are invited to attend the Creative Writing Awards Ceremony that next year, will be held during the afternoon of Sunday 21st March in the Main Hall at Queen Mary's College, Cliddesden Road, Basingstoke.

This exciting event is when the winners are announced (some will be read/performed) and trophies or prizes handed over, together with Certificates and written adjudicator feedback. Pictured is 2020 BMAF Year 2 poetry prize winner Ellie Barton. Her trophy and certificate

were presented at the school – St Mark's CoE, Hatch Warren – as the 2020 Awards Ceremony had to be cancelled due to the Pandemic.

Not everyone can be a winner like Ellie of course, but uniquely, every competition entrant receives adjudicator feedback with the remarks designed to help each writer optimise their writing skills. If English isn't your first language there's even a category – Poem into Poem – that offers the opportunity to translate a published or your own work into English. Registered assistance is also permitted to ensure the competition entry is accessible to all.

For more information please visit the BMAF 2021 website at [www.basingstokemusicandarts.org.uk](http://www.basingstokemusicandarts.org.uk) (available from Mid-September). On the home page selecting the 'sections' page will enable you find the Creative Writing Section together with all of the other festival disciplines including Singing, Piano, Speech and Drama, Choirs and Ensembles.

Specific questions on the BMAF Creative Writing competition can be addressed to BMAF Section Secretary Tony Corbin via email at: [tonycorbin@kempshott.plus.com](mailto:tonycorbin@kempshott.plus.com) or via phone to: 07801 166223.



#### SECRETARY required to join the team at Hospital Radio Basingstoke (voluntary basis)

HRB is a registered charity that broadcasts 24 hours a day to the patients and staff at Basingstoke and North Hampshire Hospital. It is run entirely by volunteers, who regularly give up their spare time to keep HRB on air and entertain our listeners.

#### The key responsibilities include:

- To act as a Trustee of Hospital Radio Basingstoke
- To attend Committee meetings and other relevant meetings and to prepare minutes.
- To coordinate the completion of DBS checks of new members and co-ordinate the forms and paperwork.
- To take part in fundraising

**Desirable skills:** knowledge of committee procedures, organised and good IT skills and to be able to prepare accurate notes of meetings and support the Chairperson.

Applications via: [www.hrbasingstoke.co.uk](http://www.hrbasingstoke.co.uk)  
(Click on: More station Info Tab and Apply to join)

THE  
STUDIOS

ROYAL ACADEMY OF  
**DANCE**  
REGISTERED TEACHER

Ballet, Tap, Contemporary Modern Jazz &  
Acrobatic Dance lessons in Kempshott &  
Beggawood.  
*Baby Ballet & Tiny Tappers classes from 2yrs.*

Tel: 01256 398586  
07770 880967

Kempshott  
Dance  
Studios

BEGGARWOOD  
Ballet Studio

IDTA

Email: [thedancestudioskb@gmail.com](mailto:thedancestudioskb@gmail.com)





**Prime  
Improvements**  
Home & Garden

07841 532 878

Painting & Decorating	Grass & Hedge cutting
Handyman Jobs	Garden Clearance
Tiling	Fencing & Decking
Flooring	Sheds & Cabins

[www.primeimprovements.co.uk](http://www.primeimprovements.co.uk)



FOR MORE THAN JUST A LEAKY TAP



## Niall Catlin PLUMBING & HEATING

EST 1991



Leaky taps to  
full bathroom installation  
Power flushing | Water softeners  
Hot water cylinders

- Boiler breakdowns, repair and servicing
- Boiler replacement
- All allied trades
- All aspects of plumbing and heating



Checkatrade.com



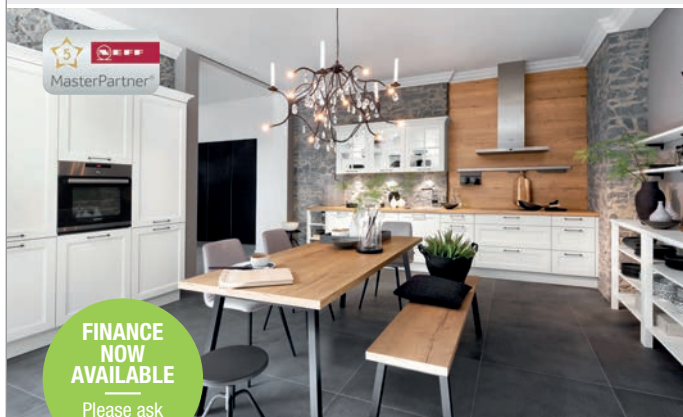
[www.niallcatlin.co.uk](http://www.niallcatlin.co.uk)

01256 818086  
07774 741021

## TWO GUYS

KITCHENS / BATHROOMS / APPLIANCES

SERVING THE PEOPLE OF BASINGSTOKE & NORTH HAMPSHIRE SINCE 1968



FINANCE  
NOW  
AVAILABLE

Please ask  
for details



DESIGN,  
SALES & FULL  
INSTALLATION  
SERVICE

01256 363123 | [twoguys.co.uk](http://twoguys.co.uk)

ARMSTRONG ROAD, DANESHILL EAST, BASINGSTOKE, HANTS RG24 8NU



Call The Professionals

Quality build, on time, on budget.

With over 10 successful years providing quality services to our customers, we possess a wide range of building professionalism to help you achieve the home of your dreams.

New Builds, Extensions, Alterations  
Kitchens, Plastering & Joinery.

mobile: 07921 756438

office: 01256 636203

website: [www.ctpbuilder.org.uk](http://www.ctpbuilder.org.uk)

email: [info@ctpbuilder.co.uk](mailto:info@ctpbuilder.co.uk)



CTP Builders Limited

LIFE IS A JOURNEY THAT STARTS  
AND ENDS WITH FAMILY



At Clarke & Son our expert teams will guide you through all your important matters:

CLARKE  
& SON  
SOLICITORS

T: 01256 320555

E: [mail@clarkeandson.co.uk](mailto:mail@clarkeandson.co.uk)



RESIDENTIAL  
PROPERTY



FAMILY LAW



WILLS & ESTATE  
PLANNING

Clarke & Son Solicitors LLP  
Manor House, 8 Winchester Road, Basingstoke, Hampshire, RG21 8UG  
[www.clarkeandson.co.uk](http://www.clarkeandson.co.uk)

**28 Years  
serving the local  
community**

# RAINBOW

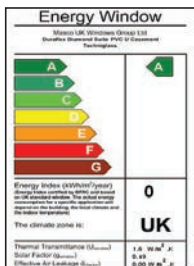
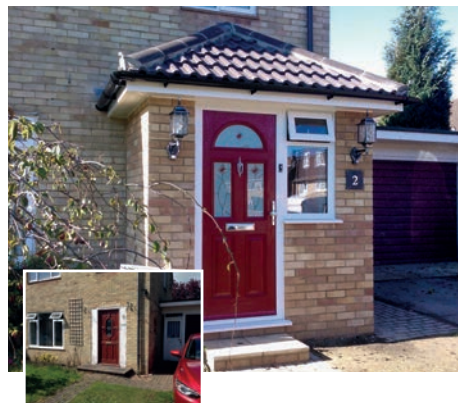
## DOUBLE GLAZING LIMITED



**1992-2020**

**Your truly local double glazing company**

**28 successful years**



**Windows • Doors • Roofline  
Conservatories • Orangeries  
Entrance Porch • Garage Conversions  
Rainbow Warm Roof Conversions**

**No deposit**

**No hassle**

**Energy 'A' Rated**

**10 year Guarantee**

**Payment on completion**



For a free no-obligation quotation please call FREEPHONE:

**0800 026 46 42 or 0118 970 1770**

**[www.rainbowdoubleglazing.co.uk](http://www.rainbowdoubleglazing.co.uk)**